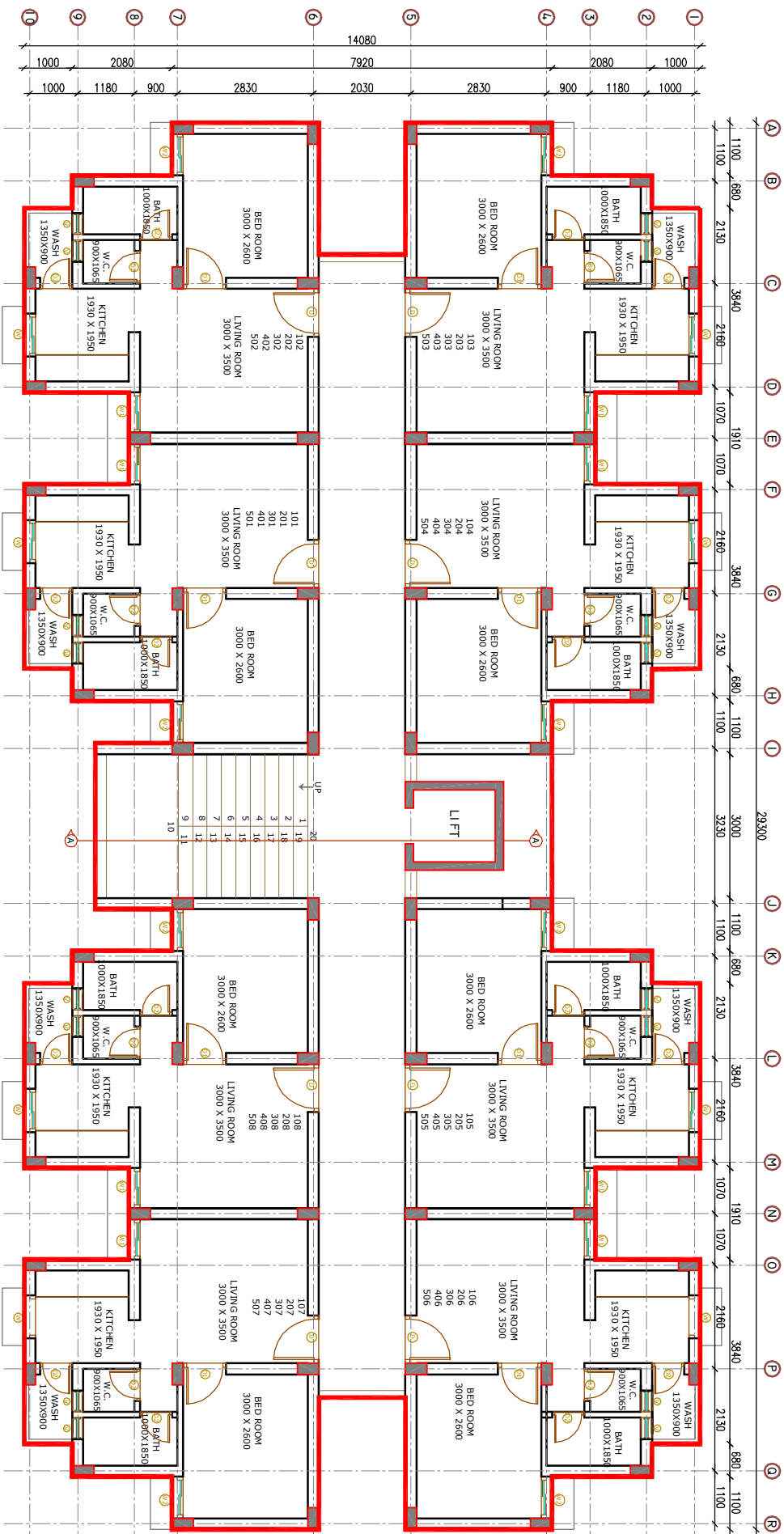
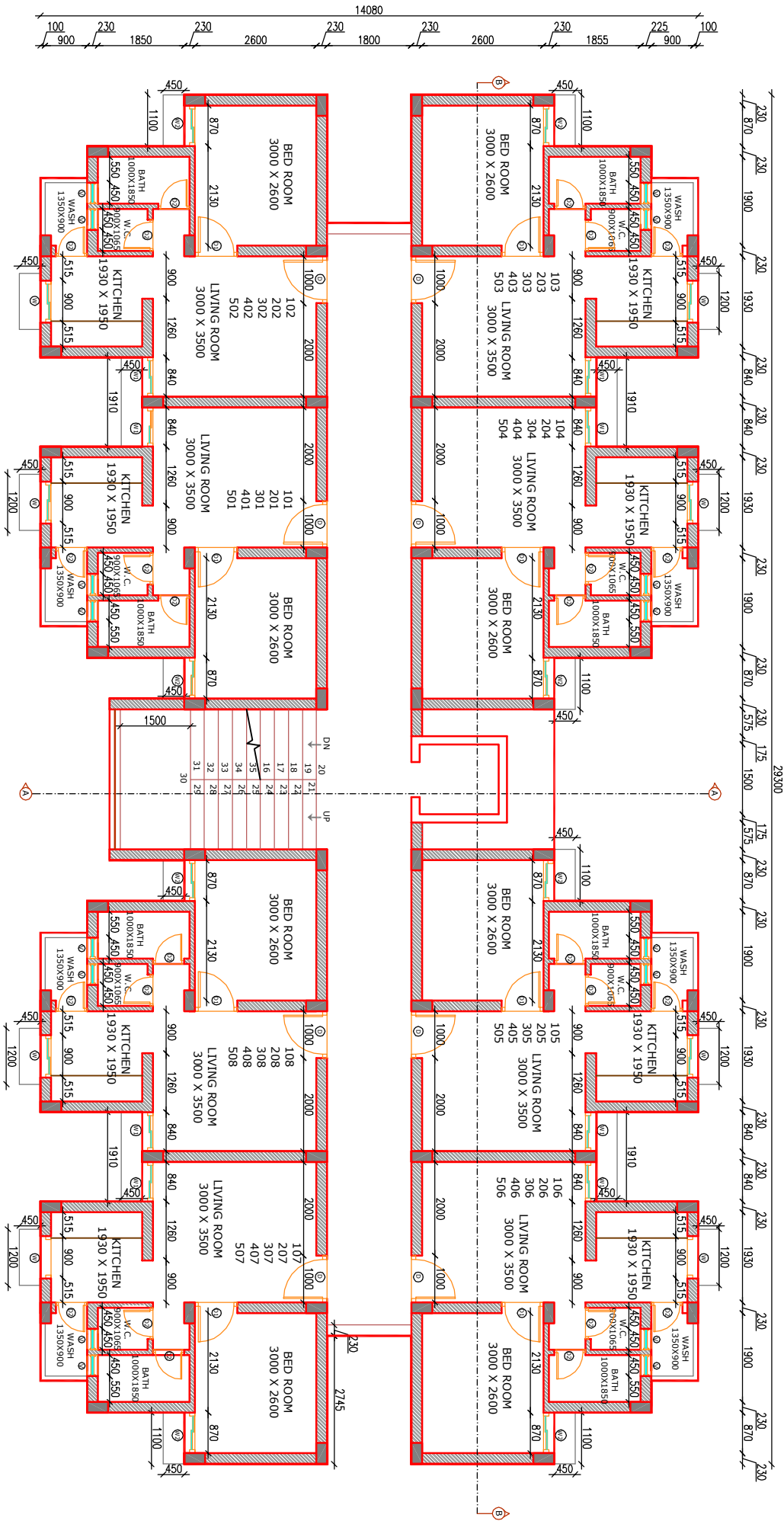


# T.P.S No. 1/B F.P. No.13 Chitra



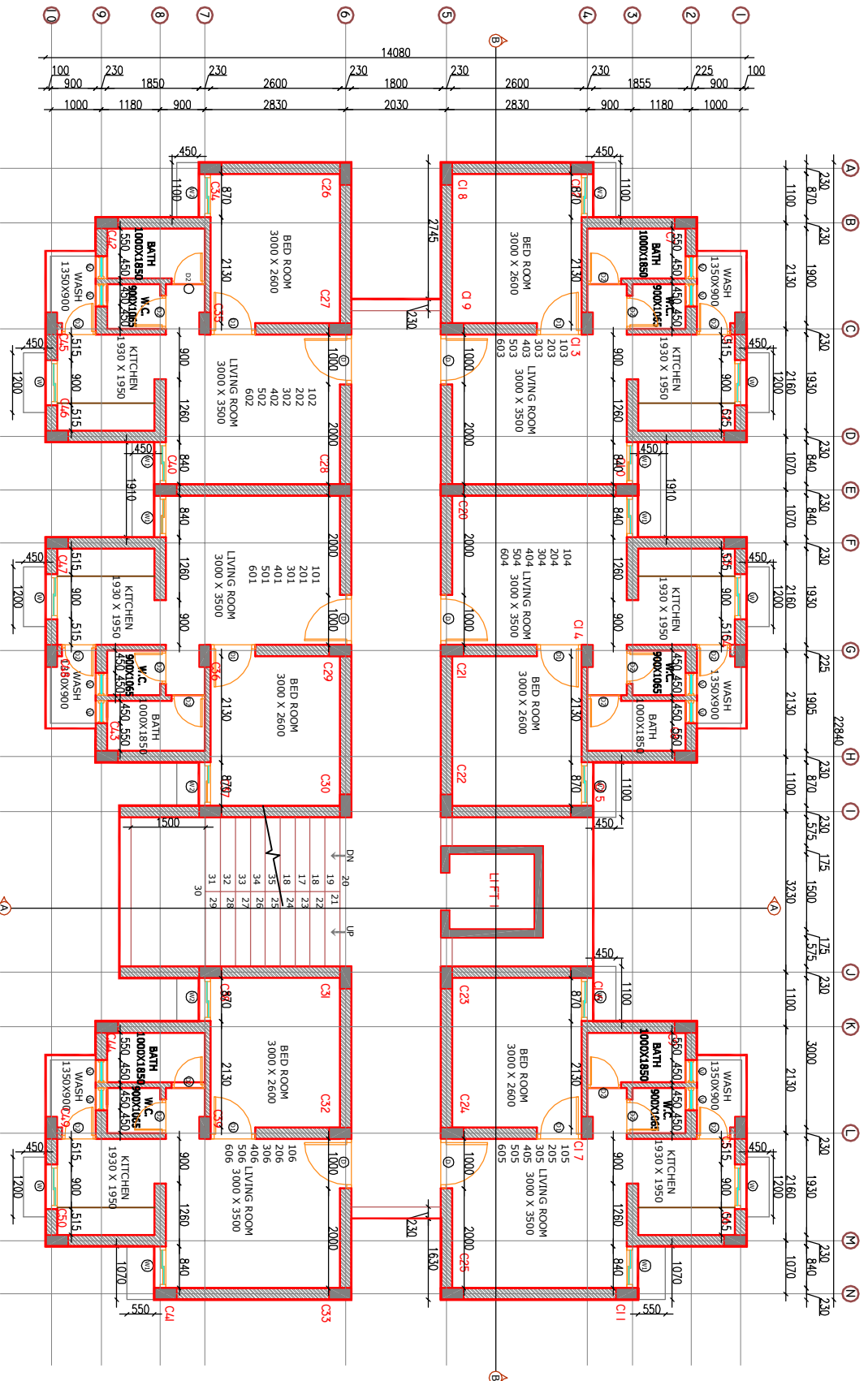
Typical floor plan (1st,2nd,3rd,4th,5th floor)

# T.P.S No. 1/B F.P. No.14 Chitra



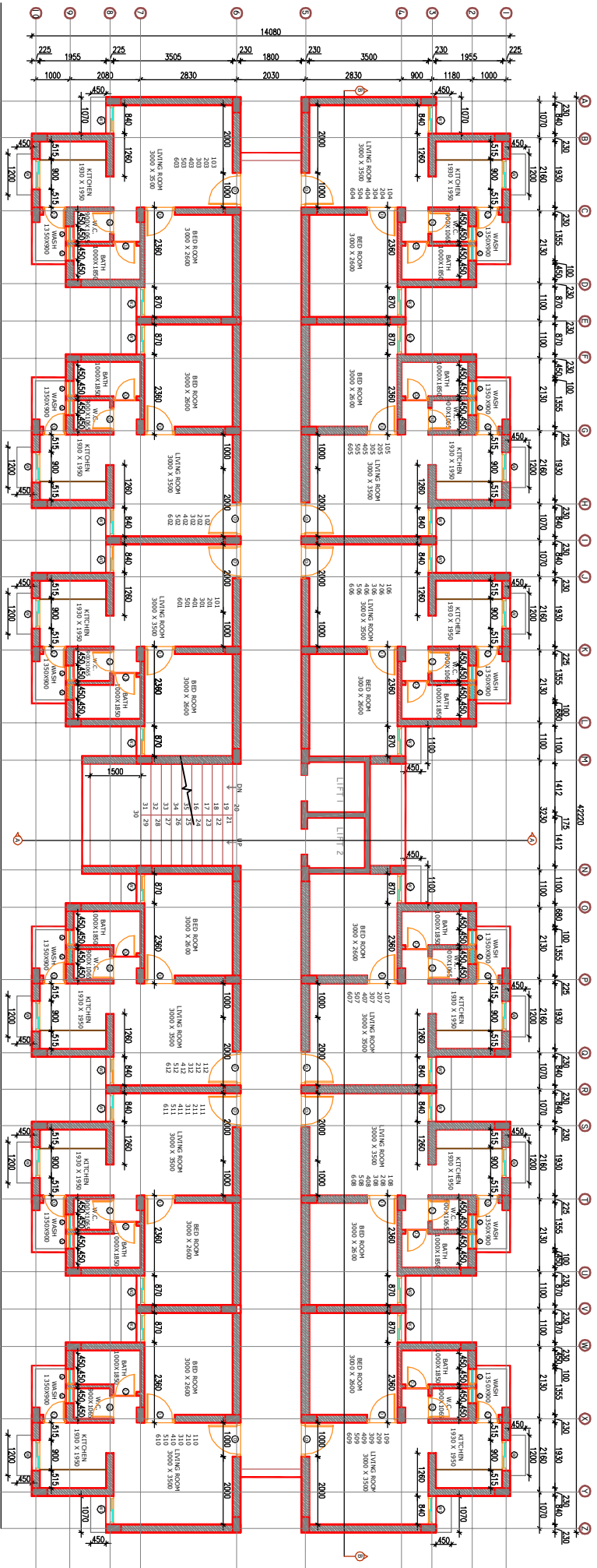
Typical floor plan (1st,2nd,3rd,4th,5th floor)

# T.P.S No. 2/A F.P. No.30 Fulsar



Typical floor plan (1st,2nd,3rd,4th,5th,6th floor)

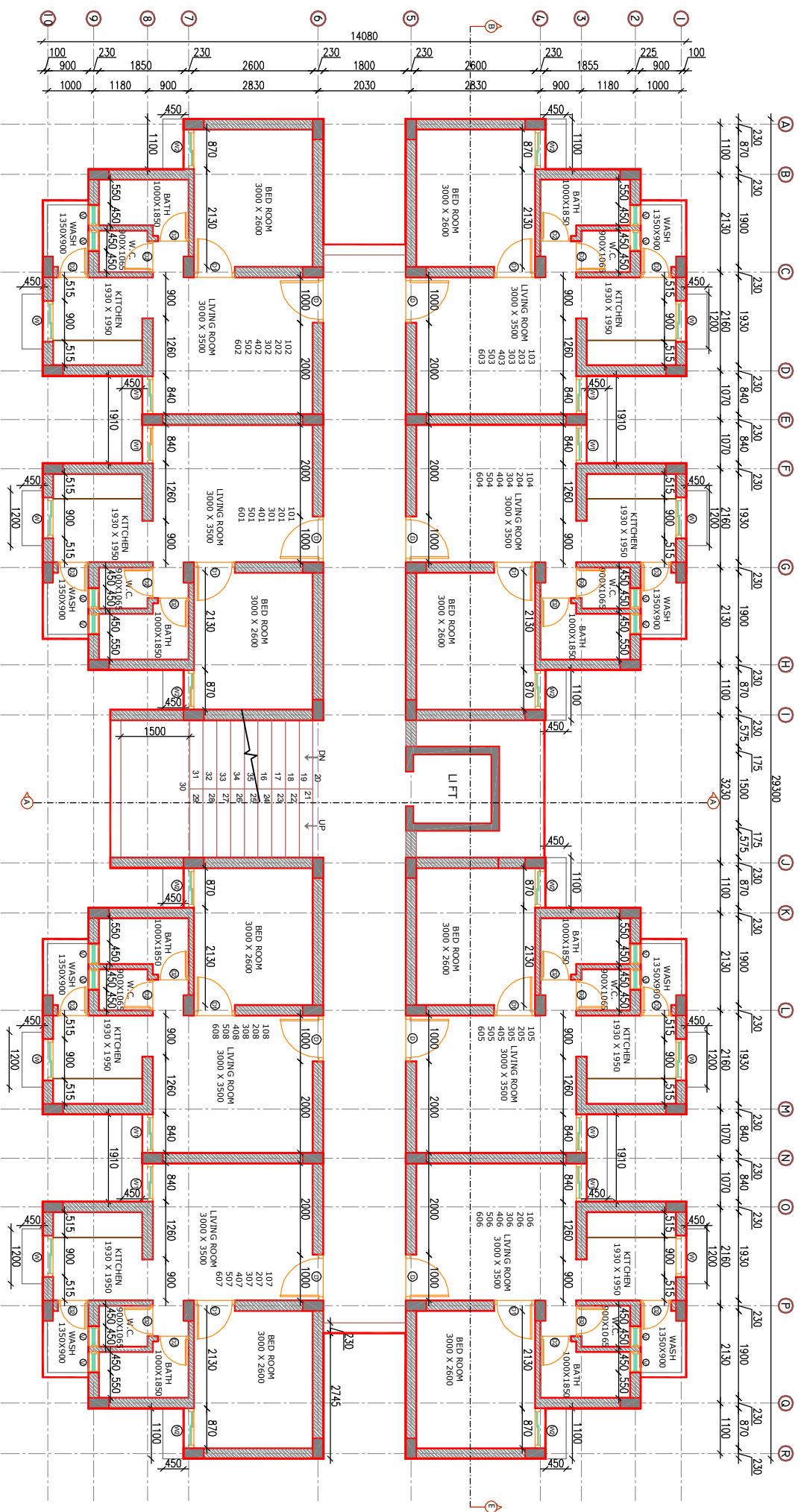
T.P.S No. 2/A F.P. No.30 Fulsar



TYPICAL FLOOR

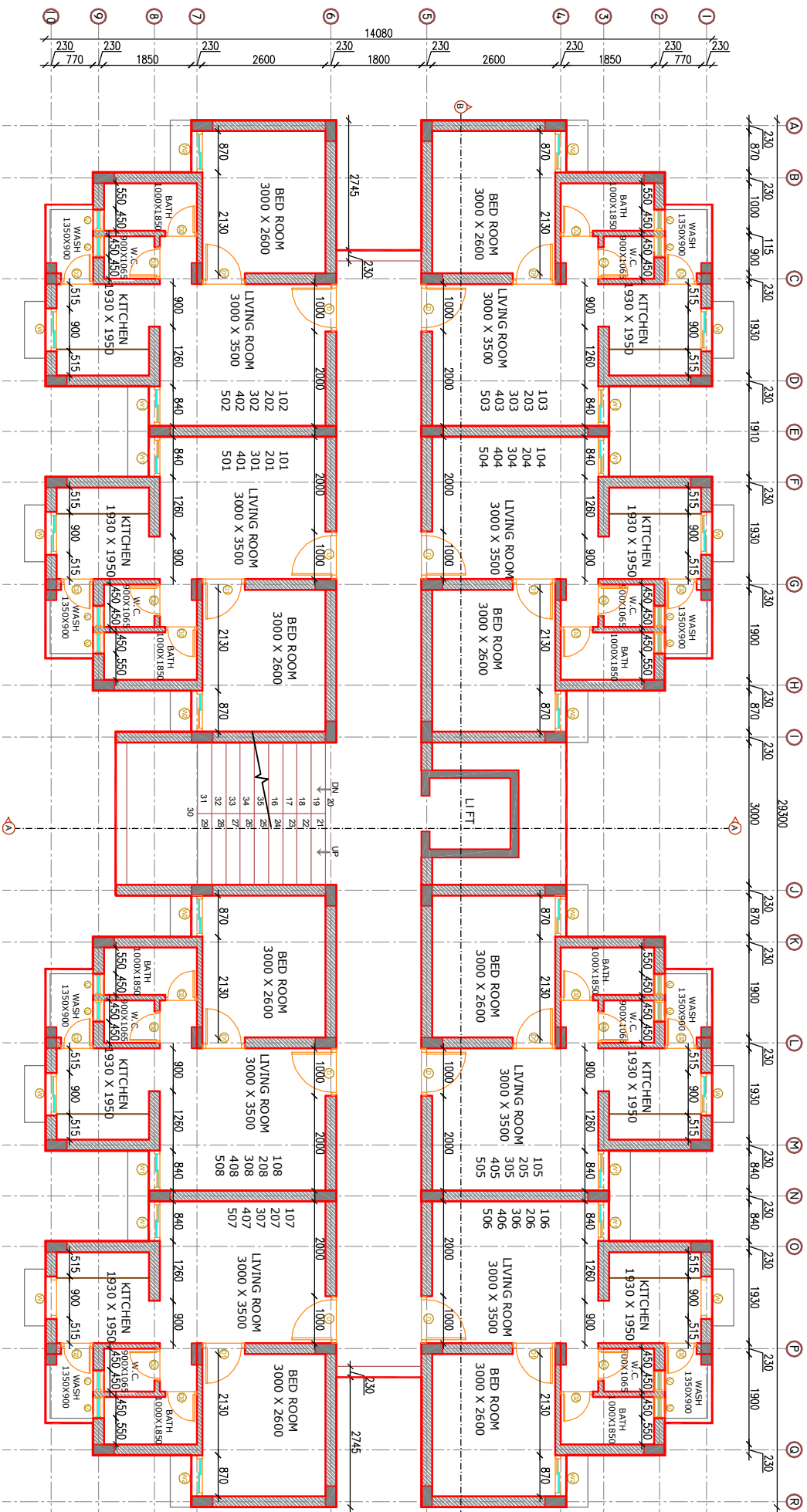
Typical floor plan (1st,2nd,3rd,4th,5th,6th floor)

# T.P.S No. 2/B.F.P. No.36 Fulsar



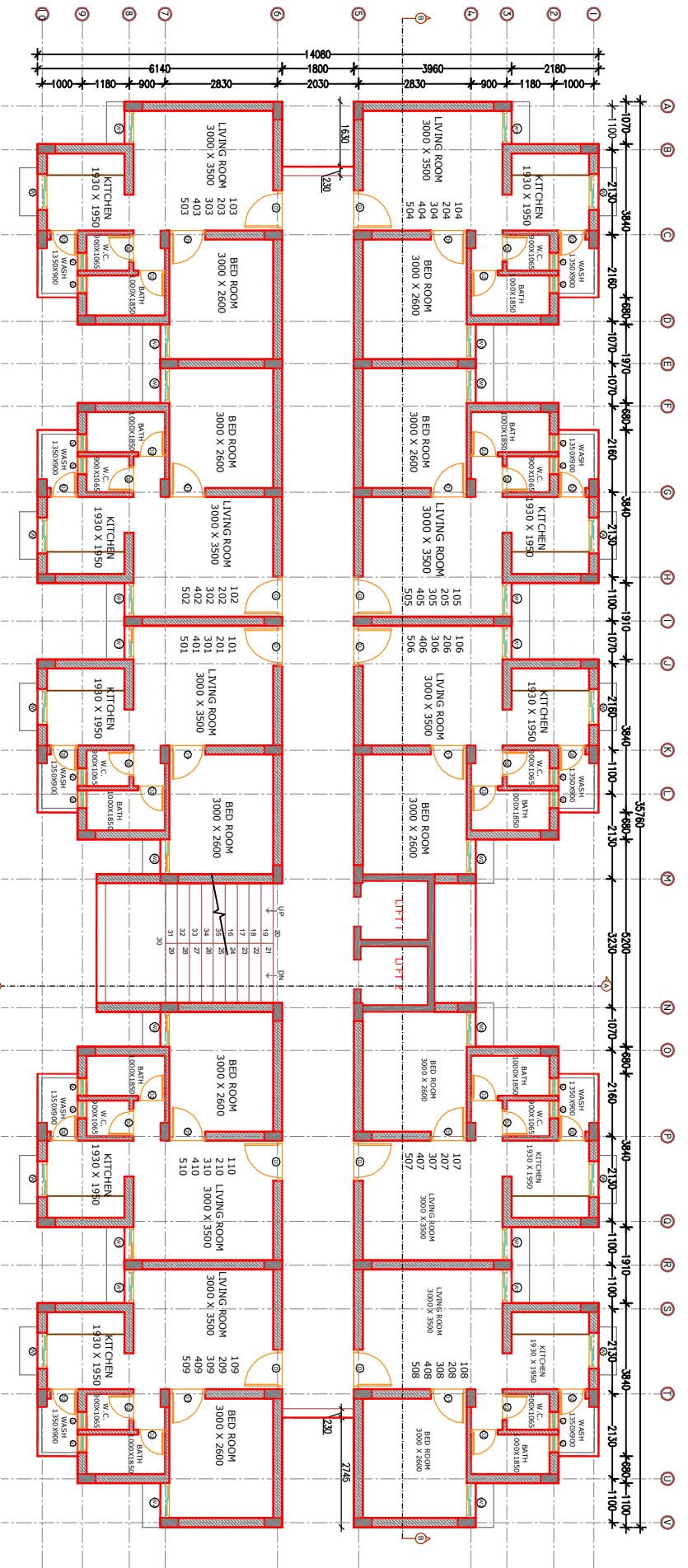
Typical floor plan (1st,2nd,3rd,4th,5th,6th floor)

# T.P.S No. 3-Ruva F.P. No.104 Ruva



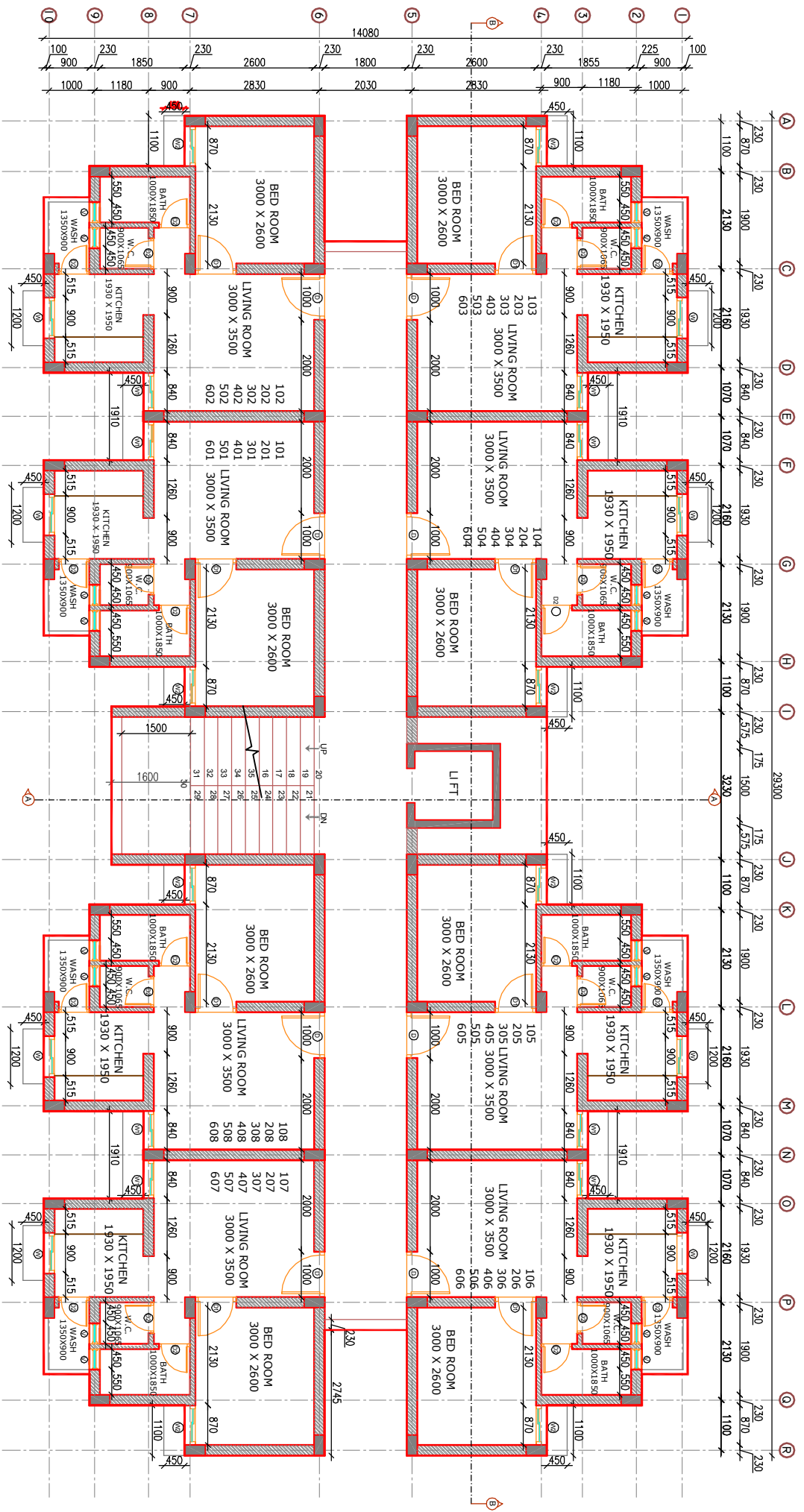
Typical floor plan (1st,2nd,3rd,4th,5th, floor)

T.P.S No. 3-Ruva F.P. No.104 Ruva



Typical floor plan (1st,2nd,3rd,4th,5th, floor)

# T.P.S No. 3-Ruva F.P. No.106 Ruva



Typical floor plan (1st,2nd,3rd,4th,5th,6th floor)